



Genesisius



MAHA RERA NO.
P52100031630





Amenities



CCTV Camera



Rain water harvesting system



24x7 security



Solar Water Connection
in Common Bathroom



Well decorative lift cladding



Genset backup for Lifts, Pumps &
Common Areas



Letter Box for Each Flat

Specification

STRUCTURE

- Earthquake Resistance RCC Structure
- Brickwork for internal walls & 6" for external wall
- Neeru finish plaster internally, Sand Face Plaster externally

KITCHEN

- Granite kitchen platform
- S S Sink
- Dado ceramic tiles up to Lintel level above platform
- Provision for water purifier, provision to exhaust fan

FLOORING

- Vitrified 2'X2' Flooring Tiles in entire apartment

TOILETS

- Designer wall tiles up to lintel level in bathroom
- 4' height wall tiles in WC
- Good quality concealed plumbing & C. P. fittings in
- Toilets & good quality Sanitary Ware for all toilets

DOOR

- Designer laminated main door with good quality door fittings
- Good quality internal flush doors with standard fittings
- 3 Track powder coated Aluminum sliding doors to terraces
- Granite door frames to all toilets

WINDOWS

- 3-Track powder coated aluminum sliding windows
- Granite sills for all windows

ELECTRIFICATION

- Concealed copper wiring
- Adequate electrical points in all rooms
- Electrical switches of standard make / equivalent

PAINTING

- Oil Bond Distemper to internal walls
- Cement paint to external walls

CONVENIENCES

- Video Door Phone in each Flat
- Provision for Telephone point in living room
- Provision for the TV in living room
- Provision for water heater in common bathrooms
- Safety grills for all windows except toilets



WING A TYPICAL FLOOR PLAN



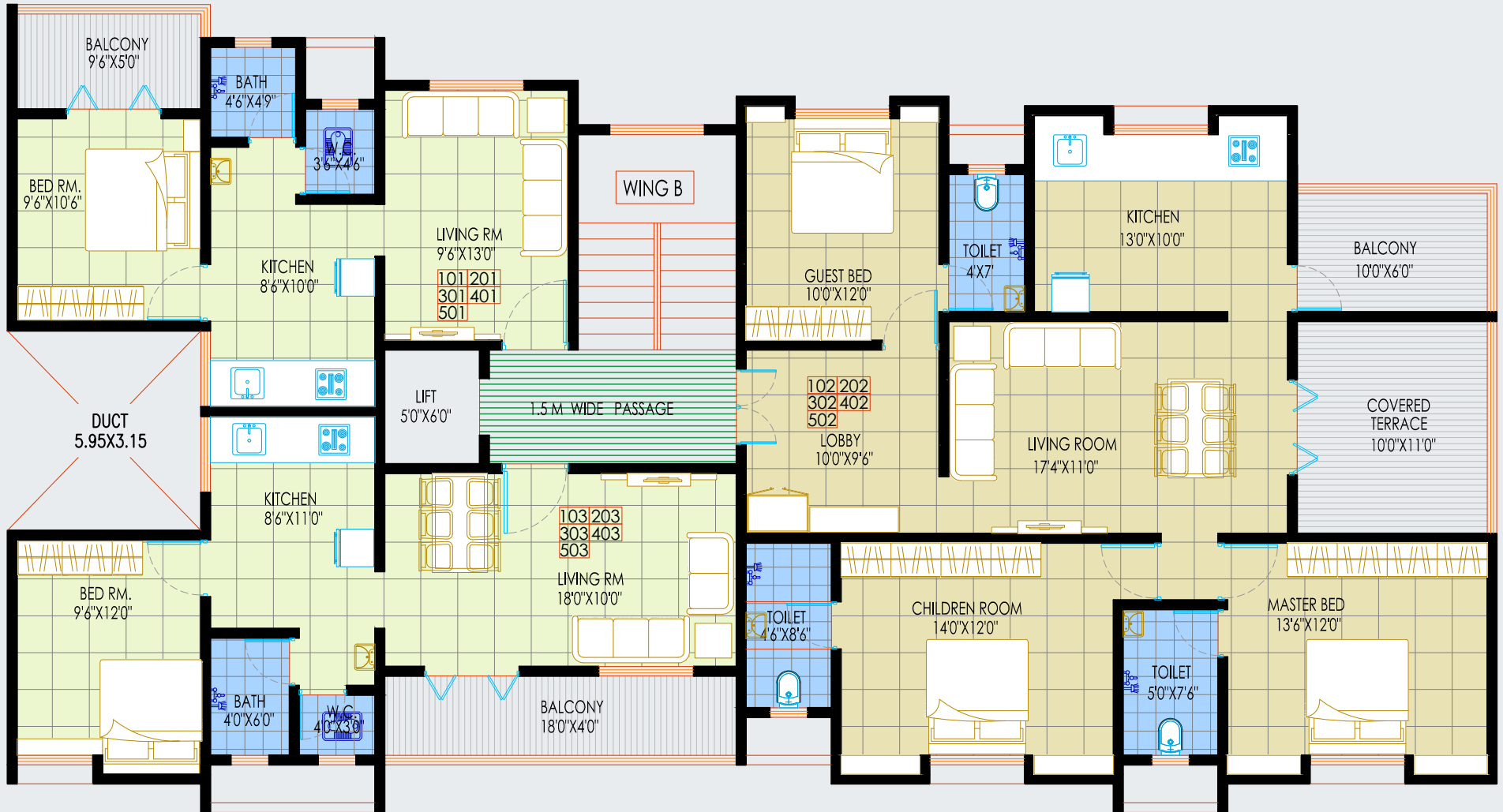
ADJACENT WING B

WING A			
FLAT NO.	CARPET AREA	BALCONY AREA	TOTAL CARPET
101	255.00	44.00	299.00
102	393.00	47.00	440.00
103	393.00	46.00	439.00
104	376.00	46.00	422.00
105	592.00	48.00	640.00
106	578.00	39.00	617.00



WING B TYPICAL FLOOR PLAN

ADJACENT WING A



WING B				
FLAT NO.	CARPET AREA	BALCONY AREA	TERRACE CARPET	TOTAL CARPET
101	382.00	47.00	—	429.00
102	1029.00	61.00	108.00	1198.00
103	455.00	75.00	—	530.00



2 BHK

- A Bedroom
- B Kitchen
- C Toilet
- D Living Room
- E Balcony



1 BHK

- A Bedroom
- B Kitchen
- C Bath
- D Living Room
- E Balcony
- F WC



MAHA RERA NO.
P52100031630

CREDITS

Architects
Plus one Designer

RCC
E Struct

Legal
Adv Vishal Ghorpade

A Project By



FOR BOOKING
9699274048 / 9882101010

Site Address:- S. No. 9, Bharne Vasti, Hinjewadi Maan Road, Maan, Pin 411057.
Web : [www. plusonedevelopers.com](http://www.plusonedevelopers.com)